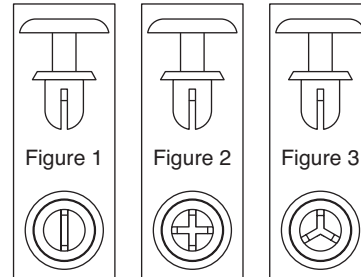
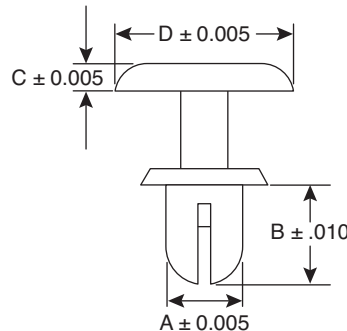
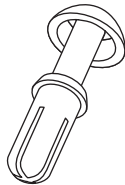


DIMENSIONS: in.

Date Last Revised: 05/29/12



Nylon Snap Rivet is designed for assemblies requiring fast and economical fasteners that can be installed without tools. The 2 piece Molded Fastener comes assembled ready for use. The Rivet is placed in the hole and the smooth, oversized head is pressed. The specially designed legs expand and firmly lock the components permanently in place. Snap Rivets are molded in high dielectric Nylon 6/6 making them ideal for electronic applications.

Parts are stocked in black.

Mouser Stock Number	Desc./ Panel Thickness	A	B	C Head H.	D Head Dia.	Hole Size	Fig. No.	Mouser Stock Number	Desc./ Panel Thickness	A	B	C Head H.	D Head Dia.	Hole Size	Fig. No.
561-SR240018	.031/.062	0.240	0.187	0.120	0.440	0.250±0.005	2	561-SR15739	.295/.335	0.157	0.390	0.071	0.317	.161/.165	2
561-SR240025	.062/.125	0.240	0.250	0.120	0.440	0.250±0.005	2	561-SR23631	.138/.217	0.236	0.310	0.118	0.472	.240/.244	2
561-SR240031	.125/.187	0.240	0.312	0.120	0.440	0.250±0.005	2	561-SR7909	.240/.047	0.076	0.090	0.047	0.165	.083/.087	1
561-SR240037	.187/.250	0.240	0.375	0.120	0.440	0.250±0.005	2	561-SR7916	.083/.110	0.076	0.160	0.047	0.165	.083/.087	1
561-SR240050	.250/.375	0.240	0.500	0.120	0.440	0.250±0.005	2	561-SR7925	.173/.197	0.076	0.250	0.047	0.165	.083/.087	1
561-SR0010	.050/.100	0.118	0.140	0.065	0.254	.123/.127	2	561-SR12130	.039/.079	0.100	0.130	0.055	0.197	.102/.106	1
561-SR0012	.122/.160	0.122	0.220	0.065	0.249	.127/.131	1	561-SR12190	.106/.142	0.100	0.190	0.055	0.197	.102/.106	1
561-SR0020	.144/.188	0.55	0.240	0.078	0.317	.160/.164	1	561-SR16220	.134/.169	0.100	0.220	0.027	0.197	.102/.106	1
561-SR0030	.160/.200	0.200	0.280	0.064	0.350	.205/.209	2	561-SR18350	.256/.295	0.118	0.350	0.063	0.252	.122/.126	1
561-SR12170	.078/.118	0.102	0.107	0.067	0.203	.107/.111	2	561-SR18310	.217/.256	0.118	0.310	0.063	0.252	.122/.126	1
561-SR12220	.125/.156	0.102	0.200	0.064	0.201	.107/.111	2	561-SR18390	.295/.335	0.118	0.390	0.063	0.252	.122/.126	1
561-SR18051	.400/.440	0.118	0.520	0.068	0.253	.123/.127	3	561-SR12180	.079/.118	0.118	0.180	0.063	0.250	.122/.126	1
561-SR13518	.060/.120	0.135	0.180	0.061	0.253	.140/.144	2	561-SR13814	.047/.083	0.135	0.140	0.063	0.252	.142/.146	2
561-SR13522	.118/.157	0.135	0.220	0.060	0.252	.140/.145	2	561-SR13818	.083/.118	0.135	0.170	0.063	0.252	.142/.146	2
561-SR15727	.175/.215	0.157	0.284	0.084	0.318	.162/.166	2	561-SR13820	.106/.142	0.135	0.200	0.063	0.252	.142/.146	2
561-SR15729	.290/.330	0.157	0.395	0.083	0.317	.162/.166	2	561-SR13824	.146/.181	0.135	0.240	0.063	0.252	.142/.146	2
561-SR15731	.148/.188	0.157	0.315	0.083	0.315	.162/.166	2	561-SR13828	.177/.217	0.135	0.280	0.063	0.252	.142/.146	2
561-SR16003	.100/.250	0.160	0.315	0.034	0.278	.165/.169	2	561-SR13831	.217/.256	0.135	0.310	0.063	0.252	.142/.146	2
561-SR1660240	.050/.180	0.157	0.236	0.081	0.375	.162/.166	1	561-SR19718	.059/.098	0.195	0.180	0.087	0.350	.201/.205	2
561-SR1660265	.170/.210	0.166	0.265	0.084	0.315	.171/.175	1	561-SR19722	.098/.138	0.195	0.220	0.087	0.350	.201/.205	2
561-SR18053	.250/.437	0.182	0.530	0.098	0.356	.187/.191	2	561-SR19726	.105/.170	0.195	0.260	0.087	0.350	.201/.205	2
561-SR1970330	.217/.256	0.197	0.330	0.085	0.356	.202/.206	2	561-SR19741	.295/.335	0.195	0.410	0.087	0.350	.201/.205	2
561-SR20037	.230/.300	0.198	0.368	0.095	0.352	.203/.207	2	561-SR23624	.098/.157	0.236	0.240	0.098	0.475	.240/.244	2
561-SR7913	.051/.079	0.076	0.130	0.047	0.165	.083/.087	1	561-SR18180	.075/.120	0.118	0.183	0.062	0.245	.123/.127	1
561-SR7919	.114/.142	0.076	0.190	0.047	0.165	.083/.087	1	561-SR16604	.250/.265	0.165	0.410	0.079	0.370	0.170±0.005	2
561-SR18260	.157/.197	0.118	0.260	0.063	0.252	.122/.126	1	561-SR12250	.142/.198	0.100	0.250	0.055	0.197	.102/.106	1
561-SR15735	.256/.295	0.157	0.350	0.071	0.317	.161/.165	2								

Available from Mouser Electronics
1-800-346-6873 / www.mouser.com

EPD-200794